



Product Specification Sheet

Astral Axial CDM Ellipsoidal



The Astral Axial Zoomspot – combines a high quality projector-like beam with a long life CDM display lamp with a peak beam of 135,000cd at 18° ensuring a high output precise beam and long operating life.

The greater efficiency of the latest compact arc discharge lamps, axial configuration and custom lens designs results in two variable zoom fixtures that deliver leading performance with a beam that is precise, even and simply adjusted from a peak to flat distribution.

Features

Long life (9000hrs+), efficient, single ended CDM ceramic type discharge lamp 70W or 150W, 3,000°K or 4,000°K colour temperature.

Available in 18°-34° or 24°-44° beam angles, interchangeable without the use of tools.

Electronic power supply only.

Slot provided for Iris or rotatable (35°) pattern holder & motorised pattern rotator.

'Swing-down' doors for easy access to lamp or lens cleaning. Isolates the mains supply when opened.

Captive lamp/reflector and lens focus system moves on brass bearing provides smooth movement.

Track and ceiling mount options.

Approvals

CE.

Mounting options

Site fixing.

Track adapter – 3 circuit international European standard or to customer's specifications – cable termination only, luminaire requires mechanical track adapter fitted for suspension.

Power current

For electrical power supply:

Current consumption for 150W 220-240V units - 0.70 amp.

Current consumption for 70W 220-240V units - 0.36 amp.

The current in the first minutes is lower than the nominal current due to less lamp power at the start up. The start-up current is therefore below the operating current and as such is not a design factor that has to be considered.

Lamps

CDM-T 70W / 830 3000K.
CDM-T 70W / 942 4200K.

CDM-T 150W / 830 3000K.
CDM-T 150W / 942 4200K.

Accessories

Pattern holder for 'M' size steel gobos – white.
Pattern holder for 'M' size steel gobos – black.
Pattern holder for 'M' size glass gobos – white.
Pattern holder for 'M' size glass gobos – black.
Len safety mesh.
Adjustable iris.
Animation disc motor.

Colours



White = PANTONE® 11-4800
Blanc de Blanc

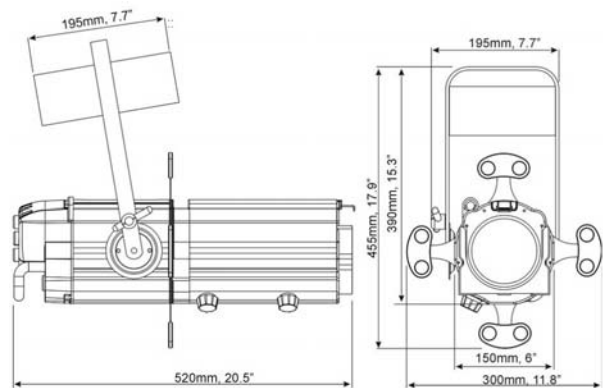
Physical data

Weight: 8.4 kg.


Colour Frame Size: 125mm x 125mm.

Pattern (Gobo) Size: M.

Included: 4x shutters, 1x colour frame & instruction sheet.



Photometric data: 18°-34° model with CDM-T 150W/942 lamp

		Beam Diameter in m									
Beam angle	18 °, m	0	0.6	1.3	1.9	2.5	3.2	3.8	4.4	5.1	
Beam angle	34 °, m	0	1.2	2.4	3.7	4.9	6.1	7.3	8.6	9.8	
											
		Throw Distance in m									
		0	2	4	6	8	10	12	14	16	
		Light Output in Lux									
Lamp											
CDM-T 150W/942	18°	Peak	36500	9125	4056	2281	1460	1014	745	570	
		Flat	19748	4937	2194	1234	790	549	403	309	
	34°	Peak	22748	5687	2528	1422	910	632	464	355	
		Flat	10124	2531	1125	633	405	281	207	158	


Conversion Factors for:

CDM 150W/830 3000°K lamp light output in Lux : multiply above CDM150 figures by x 0.70.

CDM 70W/830 3000°K lamp light output in Lux : multiply above CDM150 figures by x 0.52.

CDM 70W/942 4000°K lamp light output in Lux : multiply above CDM150 figures by x 0.50.

Photometric data: 24°-44° model with CDM-T 150W/942 lamp

		Beam Diameter in m									
Beam angle	24 °, m	0	0.9	1.7	2.6	3.4	4.3	5.1	6.0	6.8	
Beam angle	44 °, m	0	1.6	3.2	4.8	6.5	8.1	9.7	11.3	12.9	
											
		Throw Distance in m									
		0	2	4	6	8	10	12	14	16	
		Light Output in Lux									
Lamp											
CDM-T 150W/942	24°	Peak	25312	6328	2812	1582	1012	703	517	396	
		Flat	11648	2912	1294	728	466	324	238	182	
	44°	Peak	13672	3418	1519	855	547	380	279	214	
		Flat	5624	1406	625	352	225	156	115	88	

Conversion Factors for:

CDM 150W/830 3000°K lamp light output in Lux : multiply above CDM150 figures by x 0.70.

CDM 70W/830 3000°K lamp light output in Lux : multiply above CDM150 figures by x 0.52.

CDM 70W/942 4000°K lamp light output in Lux : multiply above CDM150 figures by x 0.50.



Order codes: 220V-240V

Astral Axial 18°-34° Zoomspot with electronic power supply

	For 150W CDM type lamp	For 70W CDM type lamp
Black	SA-AX15ES2B	SA-AX70ES2B
White	SA-AX15ES2W	SA-AX70ES2W

Astral Axial 24°-44° Zoomspot with electronic power supply

	For 150W CDM type lamp	For 70W CDM type lamp
Black	SA-AXW150ES2B	SA-AXW70ES2B
White	SA-AXW150ES2W	SA-AXW70ES2W

Astral Axial Zoomspots requiring ballast

	Astral Axial 18°-34° Zoomspot For 70W/150W CDM type lamps	Astral Axial 24°-44° Zoomspot For 70W/150W CDM type lamps
Black	SA-AXB	SA-AXWB
White	SA-AXW	SA-AXWW

NOTE: Please specify required lamp/colour temperature choice when placing your order.

Accessories

15ACGHW	Pattern holder for M size steel gobos – white
15ACGH	Pattern holder for M size steel gobos – black
15ACGHGLW	Pattern holder for M size glass gobos – white
15ACGHGL	Pattern holder for M size glass gobos – black
15ACIRIS	Adjustable iris – 20 leaf
15ACSM	Lens safety mesh

Selecon reserves the right to change this product specification without notice (05/08).